

## EcoDry Stop & Go AGM

### ORDER INFORMATION

Short code	AG60
TAB ID	213060
DIN marking	L2 AGM ED
Quantity per EUR/CNT pallet	57/90 Pcs

### TECHNICAL INFORMATION

Voltage	12 V
Capacity C20	60 Ah
CCA -18°C EN	680 A

### DIMENSION AND WEIGHTS

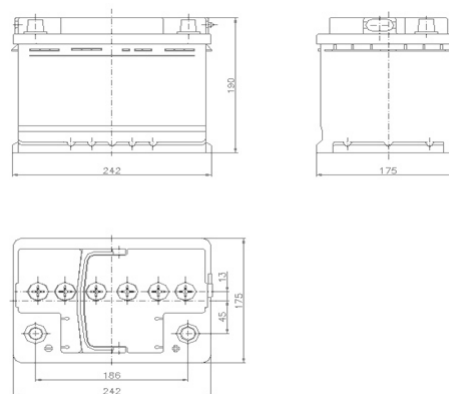
Length/Width/Height	242x175x190 mm
Total weight	17.9 kg

### TECHNOLOGY

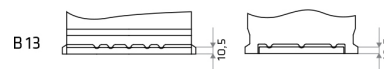
Type	Flooded
Grid type	Expanded
Grid alloy	Ca/Ca
Separator	PE
Electrolyte	1.28 g/cm <sup>3</sup>

### BOX DESIGNS

Container type	L2
Colour	Black
Polarity	0
Base hold down	B13
Cover type	Kamina
Layout	0
Terminal	1



#### Base hold down



#### Layout

