

# THE POWER OF SQUARE

## Advanced battery solution

**TAB POWER SQUARE** batteries are designed to deliver more power and longer run time comparing to conventional lead-acid batteries and are perfect choice to meet the needs of heavy-duty applications.

**SQUARE POSITIVE TUBULAR PLATE** design allows more active material surface area to be exposed to electrolyte with higher specific gravity which leads to **INCREASED POWER** and **PROLONGED RUN TIME** of the battery compared to conventional lead-acid batteries with round tube design.

## TAB POWER SQUARE

### ADVANTAGES OF TAB POWER SQUARE TRACTION BATTERIES:

- suitable for heavy-duty applications
- increased capacity in standard cell design/volume
- more active material on positive plates
- more power due to bigger plate surface compared to standard round tube design
- more positive active material surface area exposed to electrolyte with higher specific gravity
- plates can sustain higher levels of voltage throughout the discharge cycle
- higher robustness of the plates
- prolonged run time of the forklift within one cycle – fewer spare batteries needed
- special chargers equipped with faster customized charging profiles allow also opportunity charging
- prolonged cycle life based on robust plate construction

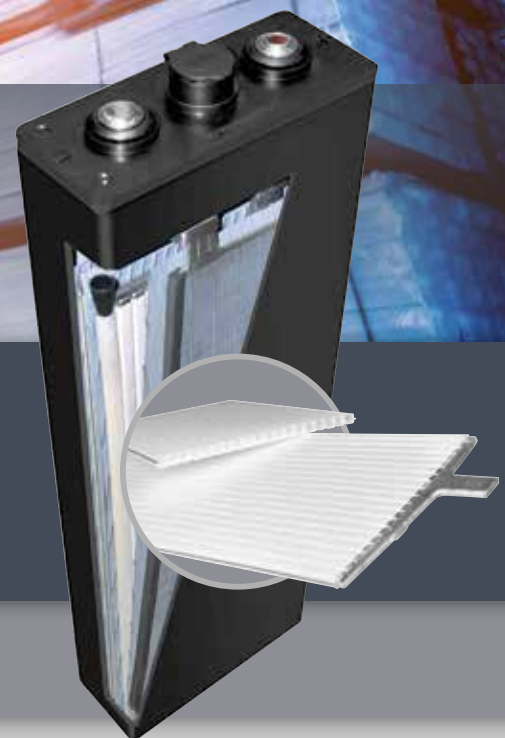
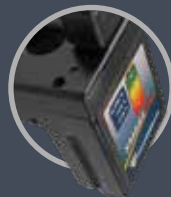


**PROLONGED RUN TIME** on each battery charge means fewer battery charge required and fewer needs of spare batteries.

**ENERGY IN MOTION**

## TAB POWER SQUARE BATTERIES ARE EQUIPPED WITH:

- **AQUAMATIC** / central water filling system /
- **AIRMATIC** / electrolyte mixing system /
- Capacitive battery **ELECTROLYTE LEVEL SENSOR**
- **BMS** / battery monitoring system / (optional)



# TAB POWER SQUARE

### 140 Ah Plate

h1=570, h2=593, length b=198mm

CELL TYPE	CAPACITY 5h	WIDTH a (mm)	WEIGHT With acid (kg)	WEIGHT Dry (kg)
2 PSQ 280	280	47	15,5	12,4
3 PSQ 420	420	65	21,9	17,4
4 PSQ 560	560	83	28,4	22,6
5 PSQ 700	700	101	35,0	27,9
6 PSQ 840	840	119	41,5	33,1
7 PSQ 980	980	137	48,1	38,4
8 PSQ 1120	1120	155	54,6	43,6
<b>9 PSQ 1260</b>	1260	173	61,6	49,3
<b>10 PSQ 1400</b>	1400	191	68,1	54,5
<b>12 PSQ 1680</b>	1680	227	81,2	65,0

### 170 Ah Plate

h1=720, h2=743, length b=198mm

CELL TYPE	CAPACITY 5h	WIDTH a (mm)	WEIGHT With acid (kg)	WEIGHT Dry (kg)
2 PSQ 340	340	47	22,4	15,8
3 PSQ 510	510	65	27,4	21,8
4 PSQ 680	680	83	35,1	28,3
5 PSQ 850	850	101	43,1	34,8
6 PSQ 1020	1020	119	51,2	41,3
7 PSQ 1190	1190	137	59,4	47,8
8 PSQ 1360	1360	155	67,5	54,3
<b>9 PSQ 1530</b>	1530	173	76,4	61,4
<b>10 PSQ 1700</b>	1700	191	84,5	67,9
<b>12 PSQ 2040</b>	2040	227	100,8	80,8

Electrolyte density at 30 °C: 1,31 ± 0.01kg/l. Weight tolerance is ± 5%.  
Cells from 9 to 12 PSQ types are available with 4 poles only.



# ENERGY IN MOTION