

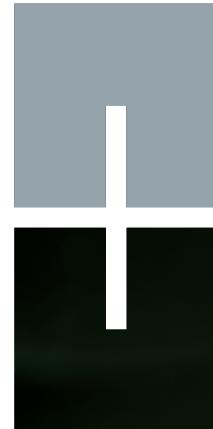
e.storage





TAB E.STORAGE

TAB e.storage CLEVER and FAMILY provide solutions for applications throughout power supply systems including Residential, Commercial and UPS (Uninterruptible Power Supply).



APPLICATION



SELF-CONSUMPTION

- Electric bill savings
- Charge during off-peak times
- Discharge during peak times



BACKUP POWER SUPPLY

Discharge during a black out functioning as backup power.



OFF GRID SYSTEMS IN COOPERATION WITH RENEWABLES

Store solar energy generated from photovoltaic panels for the future use.

Following charger/inverter equipment is supported:

Delta, Deye, Growatt, SMA, Sofar, Solax, Solis, Studer, Sunsynk, Victron and ZCS Azzurro.

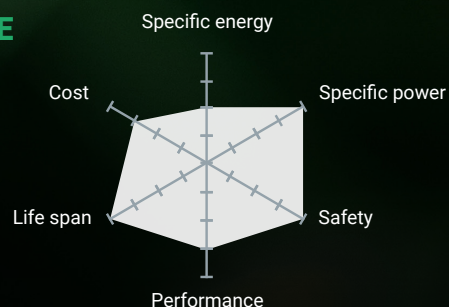
Others on demand.

TECHONOLGY

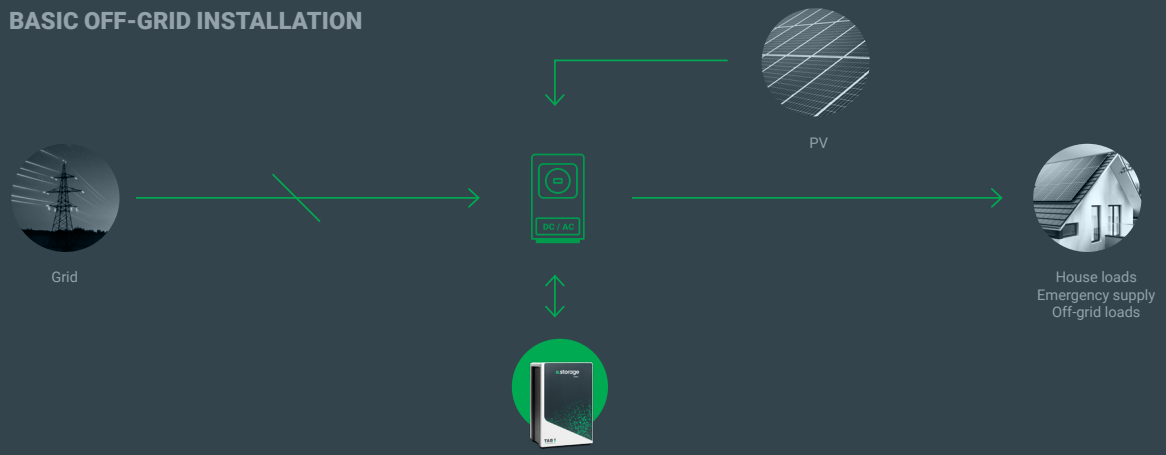


LFP – LITHIUM IRON PHOSPHATE (LiFePO4)

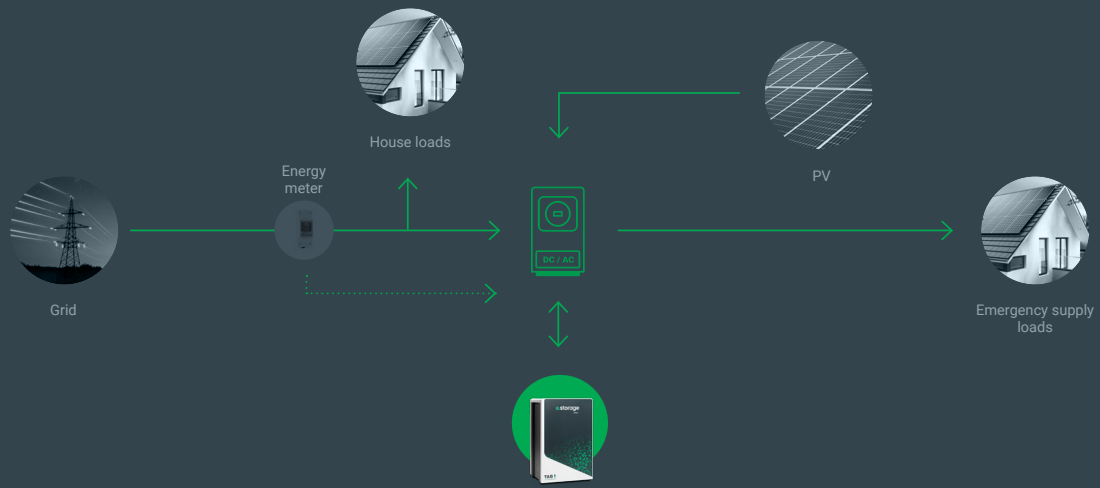
- Good thermal stability
- Long cycle life
- High power rating
- Safe



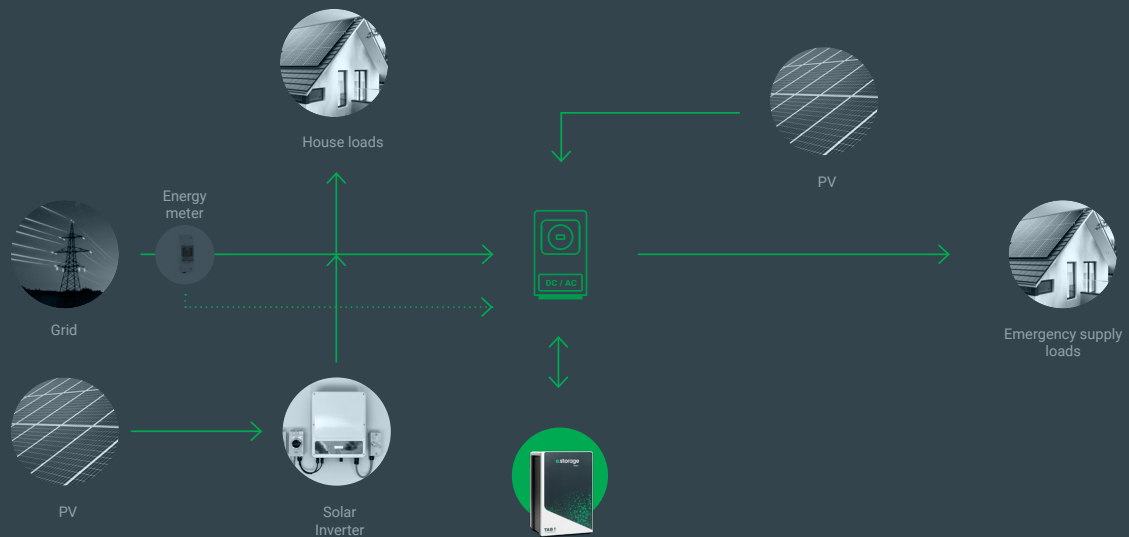
BASIC OFF-GRID INSTALLATION



STANDARD ESS INSTALLATION



AC COUPLED GRID-TIED PV





TAB e.storage CLEVER

Advantages

- Modular design (1 to 6 modules, up to 30kWh capacity)
- Integrated fuses (Clever 4 and 6)
- Clean energy recovery through solar panels
- Customizable system according to needs
- Savings on your electricity bill
- EU design
- Compatible with Tier 1 inverter brands

ID Number	1026507	1026508	1026509	1026510	1026511	1026512	1026513	1026514
TAB e.storage CLEVER Type	2.1	2.2	4.2	4.3	4.4	6.4	6.5	6.6
Nominal Voltage [V]	51.2		51.2			51.2		
Nominal Capacity [Wh]	5120	10240	10240	15360	20480	20480	25600	30720
Dimension [mm]	530x495x476		530x495x971			530x495x1341		
Weight [kg]	63.5	111	121.5	169	216.5	224.6	272.1	319.6
Discharge Voltage [V]	44.8		44.8			44.8		
Charge Voltage [V]	56.8		56.8			56.8		

TAB e.storage FAMILY

Advantages

- Modular design (1 to 8 modules, up to 40kWh capacity)
- Compact and solid solution
- Integrated fuses
- Clean energy recovery through solar panels
- Customizable system according to needs
- Savings on your electricity bill
- EU design
- Compatible with Tier 1 inverter brands



ID Number	1026515	1026516	1026517	1026518	1026519	1026520	1026522	1026524
TAB e.storage FAMILY Type	3.1	3.2	3.3	5.3	5.4	5.5	8.6	8.8
Nominal Voltage [V]	51.2		51.2			51.2		
Nominal Capacity [Wh]	5120	10240	15360	15360	20480	25600	30720	40960
Dimension [mm]	550x470x850			550x470x1220			550x470x1775	
Weight [kg]	79.5	127	174.5	184.5	232	279.5	343	438
Discharge Voltage [V]	44.8		44.8			44.8		
Charge Voltage [V]	56.8		56.8			56.8		



TAB e.module L5.1

TAB e.module L5.1 with its modular design concept and easy installation is an ideal solution for residential storage applications.

ID Number	1026194
TAB e.module Type	L5.1
Nominal Voltage [V]	51.2
Nominal Capacity [Wh]	5120
Charge/Discharge Current [A]	75 (recommended continuous)
	100 (maximum continuous)*
	200 (peak@15s)
Dimension [WxDxH, mm]	442x459x160
Weight [kg]	47.5

* The maximum continuous current for the battery is considered at a temperature of 10 ~ 35°C. Outside this temperature range, the current will be lower.

Advantages

Safety

- LFP (lithium iron phosphate) cells enable highest safety
- BMS protects the cells in all angles (abnormal temperature, current, voltage, SoC, SoH,...)

Optimal electricity cost

- Long cycle life and superior performance

Modular design

- Gives highest flexibility
- Quick installation
- Power of choice of capacity for end consumer

Compatibility

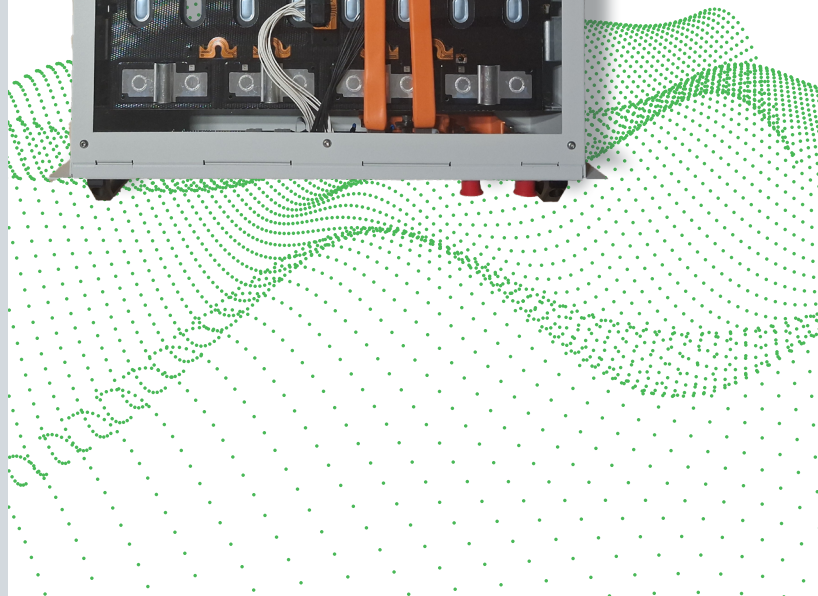
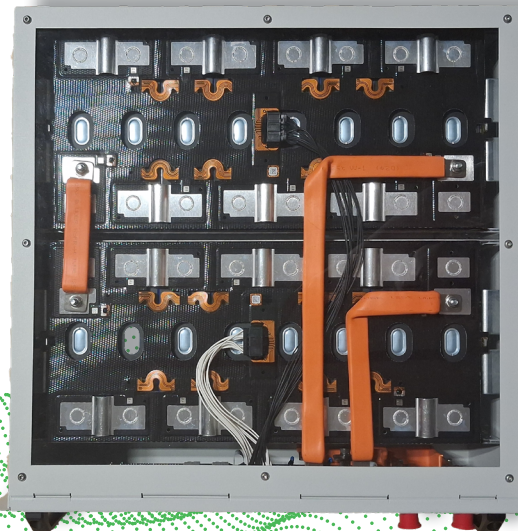
- Compatible with Tier 1 inverter brands



CERTIFICATES

TAB e.module L5.1:

- UN38.3 – transportation (mandatory for air transport)
- IEC 62619, 63056 – safety
- CE – Electromagnetic compatibility, LVD
- EN 13849-1:2015 (Performance level C)





TAB FLEXHUB

Most LV battery systems are limited by their internal BMS architecture. TAB FLEXHUB transforms a residential platform into a light C&I capable system - without redesigning battery modules.

Architecture	Max Modules	Max Capacity
Standard LV System	32	~164 kWh
With TAB LV HUB	6 × 32	~983 kWh



Remove System Ceiling:

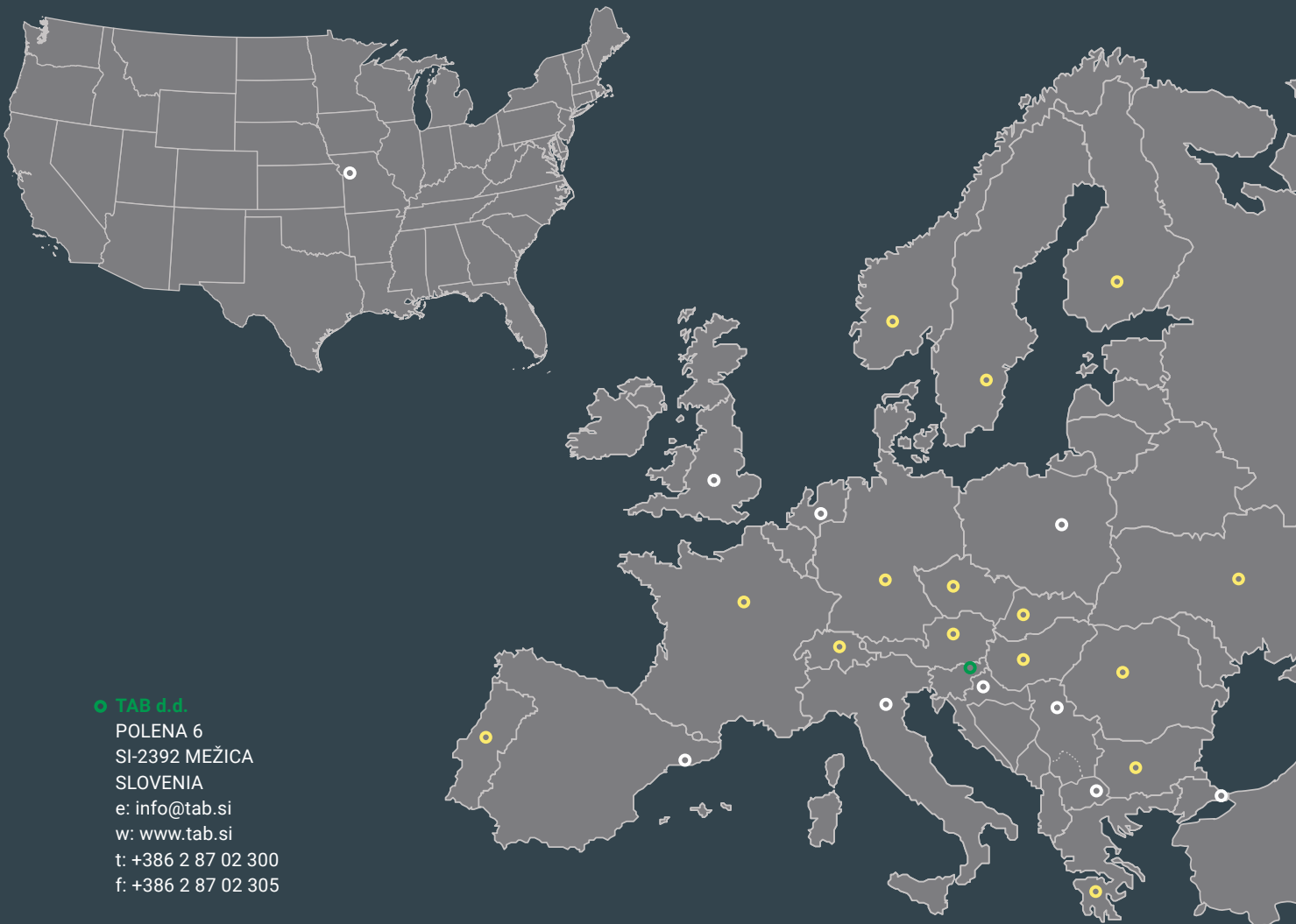
- Multi-cluster battery architecture
- Parallel group management
- Centralized monitoring and coordination
- Seamless scalability



Intelligent Multi-Cluster Control:

- Automatic detection of new battery clusters
- Group balancing logic
- Real-time monitoring per cluster
- Unified SoC / SoH management
- Secure encrypted communication





● **TAB d.d.**
 POLENA 6
 SI-2392 MEŽICA
 SLOVENIA
 e: info@tab.si
 w: www.tab.si
 t: +386 2 87 02 300
 f: +386 2 87 02 305

● **TAB MAK DOOEL** Probishtip
 MAKEDONSKI REVOLUCIONERI 50
 2210 PROBISHTIP
 NORTH MACEDONIA
 e: info@tab-mak.mk
 w: www.tab-mak.mk
 t: +389 3 24 81 501

TAB ITALIA S.P.A.
 VIA XXV APRILE 1945, N. 8
 24050 ZANICA (BG)
 ITALY
 e: info@tabitalia.com
 w: www.tabitalia.com
 t: +39 0363 60528

TAB POLSKA Sp. z o.o.
 UL. PRZEMYSŁOWA 5
 05 082 BLIZNE ŁASZCZYŃSKIEGO
 POLAND
 e: buiro@tab-polska.pl
 w: www.tab-polska.pl
 t: +48 22 487 50 70

TAB SPAIN S.L.
 CALLE LLOBATERES 28, P.I. SANTIGA
 08210 BARBERA DEL VALLES
 BARCELONA
 SPAIN
 e: info@tabspain.com
 w: www.tabspain.com
 t: +34 910 880 066

TAB BATERIJE d.o.o.
 ZEMUNSKA 301
 11277 UGRINOVCI
 SERBIA
 e: office@tabbaterije.rs
 w: www.tabbaterije.rs
 t: +381 1 377 4452

BATERIJA-TAB HRVATSKA d.o.o.
 DUGOSELKA 102
 1360 SESVETE
 CROATIA
 e: ured@baterija.hr
 w: www.baterija.hr
 t: +385 1 233 9 233

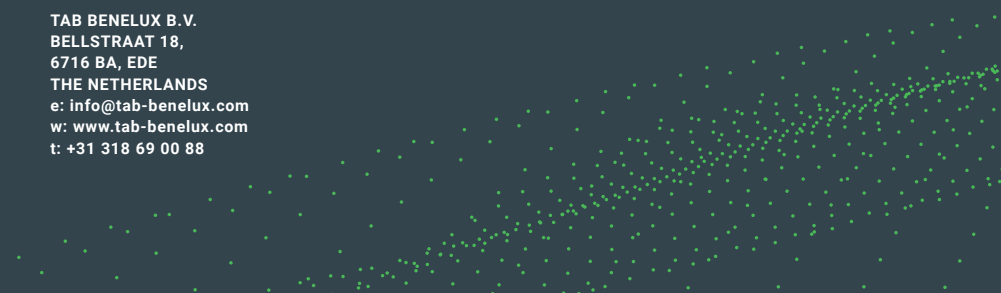
TAB BAYKAL AKÜMÜLATÖR SANAYİ
 VE TİCARET LTD. ŞTİ ESENTEPE,
 2950. SK. NO:1 BLOK 7/A
 34265 SULTANGAZI / İSTANBUL
 TURKEY
 e: info@tab-baykal.com
 w: www.tab-baykal.com
 t: +90 212 417 52 43

TAB BENELUX B.V.
 BELLSTRAAT 18,
 6716 BA, EDE
 THE NETHERLANDS
 e: info@tab-benelux.com
 w: www.tab-benelux.com
 t: +31 318 69 00 88

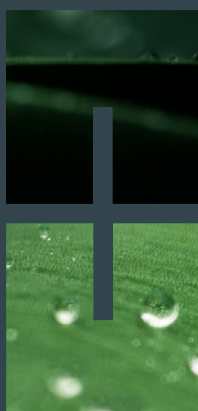
TAB USA, LLC
 1501 SHEPHERD ROAD
 SUITE 105 LIBERTY
 MO 64068
 USA
 e: admin@tab-usa.com
 t: +1 816 298 0101

TAB BATTERY UK LIMITED
 UNIT B1 WELLINGTON WAY
 AIRFIELD BUSINESS PARK
 MARKET HARBOROUGH
 LE16 7WB
 UNITED KINGDOM
 e: info@tabbatteryuk.com
 w: www.tabbatteryuk.com
 t: +44 18 58 433 008

● **PARTNERS**



PURE ENERGY, BRIGHT FUTURE



TAB Tovarna Akumulatorskih Baterij, d.d. Polena 6, SI-2392 Mezica, Slovenia
Tel: +386 2 87 02 300 Web: www.tab.si E-mail: info@tab.si

TAB 
Li-ion batteries