

TAB MOTION MONOBLOCK BATTERIES



TAB

TAB Motion Pasted
TAB Motion Tubular
TAB Motion AGM
TAB Motion GEL

TAB Motion Pasted

is a flooded small traction battery with flat grid plates.

ADVANTAGES:

- + excellent vibration resistance,
- + high rate discharge capability,
- + high performance in difficult working conditions,
- + economical and reliable ...

APPLICATIONS:

- + wheelchairs,
- + truck applications,
- + caravans and motorhomes,
- + battery driven carts,
- + boats,
- + cleaning machines,
- + solar systems ...

CHARGING:

- + TAB Motion batteries can be recharged with 50 Hz or HF charger.
The charging profile is Wa; WoWa, IUla; WUIa acc. to DIN 41773 and 41774.



TAB Motion Pasted

Number of cycles: 300 (IEC / EN 60254-1 / 25 °C)

| TAB ID | Short code | C100 (Ah) | C20 (Ah) | C5 (Ah) | Box Type | Voltage (V) | LxWxH (mm) | BHD | Layout | PCS per Pallet (EUR/CNT) | Weight (kg) |
|--------|------------|-----------|----------|---------|----------|-------------|-----------------|-----|--------|--------------------------|-------------|
| 207860 | 50 P | 70 | 60 | 50 | L2 | 12 | 242x175x190 | B13 | 0 | 57/90 | 16,4 |
| 207875 | 60 P | 80 | 75 | 60 | L3 | 12 | 278x175x190 | B13 | 0 | 48/80 | 19,0 |
| 207905 | 85 P | 115 | 105 | 85 | L5 | 12 | 353x175x190 | B13 | 0 | 36/60 | 23,7 |
| 206895 | 80 P | 115 | 105 | 80 | 59518 | 12 | 312x176x212 | B0 | 0 | 36/60 | 22,3 |
| 205105 | 105 P | 125 | 120 | 105 | 60528 | 12 | 344x172x212/234 | B0 | 0 | 36/48 | 26,7 |
| 206125 | 110 P | 155 | 140 | 110 | 62512 | 12 | 344x172x262/284 | B0 | 0 | 24/36 | 31,8 |
| 205835 | 110 P MAC | 150 | 140 | 110 | MAC 110 | 12 | 509x175x182/208 | B0 | 3 | 24/40 | 34,3 |
| 205880 | 150 P | 190 | 180 | 150 | B | 12 | 512x222x194/221 | B0 | 3 | 21/28 | 43,7 |
| 205925 | 190 P | 245 | 225 | 190 | C | 12 | 518x273x214/240 | B0 | 3 | 18/24 | 56,1 |

TAB Motion Tubular

is a flooded small traction battery with robust tubular positive plates.

ADVANTAGES:

- + premium tubular plate construction with free electrolyte ensures long operating life,
- + high rate discharge capability,
- + for applications which are used in difficult working conditions,
- + reliable and durable - gives 1200 cycles performance ...

APPLICATIONS:

- + golf carts,
- + cleaning machines,
- + wheelchairs,
- + mobile elevating work platforms,
- + electric elevating platform trucks,
- + solar system ...

CHARGING:

- + TAB Motion batteries can be recharged with 50 Hz or HF charger.
The charging profile is Wa; WoWa, IUla; WUIa acc. to DIN 41773 and 41774.



TAB Motion Tubular

Number of cycles: 1200 (IEC / EN 60254-1 / 25 °C)

| TAB ID | Short code | C100 (Ah) | C20 (Ah) | C5 (Ah) | Box Type | Voltage (V) | LxWxH (mm) | BHD | Layout | PCS per Pallet (EUR/CNT) | Weight (kg) |
|---------|--------------|-----------|----------|---------|-----------|-------------|-----------------|-----|--------|--------------------------|-------------|
| 113812 | 55 T | 65 | 60 | 55 | L3 | 12 | 278x175x190 | B13 | 0 | 48/80 | 18,9 |
| 131812 | 90 T | 115 | 110 | 90 | 59518 | 12 | 303x175x208/229 | B1 | 0 | 36/48 | 28,7 |
| 101812 | 95 T | 130 | 115 | 95 | 60528 | 12 | 344x172x212/234 | B0 | 0 | 36/48 | 30,4 |
| 100812 | 120 T | 155 | 140 | 120 | 62512 | 12 | 344x172x262/284 | B0 | 0 | 24/36 | 37,5 |
| 112812 | 145 T | 180 | 165 | 145 | B | 12 | 512x222x194/220 | B0 | 3 | 21/28 | 47,5 |
| 8372395 | Golf Cart T | 240 | 220 | 180 | Golf Cart | 6 | 244x190x270/281 | B0 | 0 | 36/48 | 31,5 |
| 8380967 | Golf Cart TS | 270 | 250 | 210 | Golf Cart | 6 | 244x190x270/281 | B0 | 0 | 36/48 | 32,4 |

TAB Motion AGM is a VRLA (Valve Regulated Lead Acid) battery produced in Absorption Glass Mat technology according to EN 60254-1 standard.

ADVANTAGES:

- + 30 % higher energy density in comparison with flooded battery,
- + very low selfdischarge rate,
- + no corrosive exhaust (applicable for food industry and pharmacy),
- + robust design, stroke and vibration resistant,
- + low charging factor (1,08) lowers energy consumption,
- + electrolyte is kept immobilized in AGM (prevents leakage if housing is broken),
- + maintenance free - install and forget,
- + high starting performance ...

APPLICATIONS:

- + caravans, mobile homes,
- + boats,
- + wheelchairs,
- + cleaning machines,
- + alarm systems,
- + UPS and PV systems ...

CHARGING:

- + chargers with IU and IUa charging characteristic
- + cycling regime IU, WU / U = 14,4 - 14,8 V
- + continuous charging IU, WU / U = 13,5 - 13,8 V



Number of cycles: 400 (IEC / EN 60254-1 / 25 °C)

TAB Motion AGM

| TAB ID | Short code | C100 (Ah) | C20 (Ah) | C5 (Ah) | Box Type | Voltage (V) | L×W×H (mm) | BHD | Layout | PCS per Pallet (EUR/CNT) | Weight (kg) |
|--------|------------|-----------|----------|---------|----------|-------------|-------------|-----|--------|--------------------------|-------------|
| 172060 | 45 AGM | 65 | 60 | 45 | L2 | 12 | 242×175×190 | B13 | 0 | 57/90 | 17,9 |
| 172070 | 55 AGM | 75 | 70 | 55 | L3 | 12 | 278×175×190 | B13 | 0 | 48/80 | 20,5 |
| 172080 | 60 AGM | 85 | 80 | 60 | L4 | 12 | 315×175×190 | B13 | 0 | 36/60 | 23,2 |
| 172090 | 70 AGM | 100 | 95 | 70 | L5 | 12 | 353×175×190 | B13 | 0 | 36/60 | 26,0 |

TAB Motion GEL is a VRLA (Valve Regulated Lead Acid) battery which consists of Ca grid plates in special alloy with gel electrolyte. Casing is made of reinforced PP material. All this makes the battery reliable, maintenance-free all-rounder.

ADVANTAGES:

- + completely maintenance free - install and forget,
- + electrolyte is kept immobilized in GEL (prevents stratification of electrolyte, protected against spilling),
- + self-discharge less than 2 % a month which means less difficulties during transport and storage, depends on temperature,
- + no corrosive exhaust (applicable for food industry and pharmacy),
- + robust design, stroke and vibration resistant ...

APPLICATIONS:

- + caravans and mobile homes,
- + boats,
- + cleaning machines,
- + electrical vehicles,
- + solar systems,
- + UPS systems ...

CHARGING acc. to DIN41773 (IU-characteristic):

VOLTAGE CHARGING at room temperature

- + cyclic application: 14,30 – 14,50 V
- + stationary application: 13,40 – 13,70 V
- + temperature compensation 30 mV/K

CURRENT CHARGING

- + maximum current is 30 % capacity C20 (e.g. C20 = 100Ah, I_{max} = 30A)



Number of cycles: 700 (IEC 60254-1)

TAB Motion GEL

| TAB ID | Short code | C100 (Ah) | C20 (Ah) | C5 (Ah) | Box Type | Voltage (V) | L×W×H (mm) | BHD | Layout | PCS per Pallet (EUR/CNT) | Weight (kg) |
|--------|-------------------|-----------|----------|---------|-----------|-------------|-----------------|-----|--------|--------------------------|-------------|
| 215060 | 50 Gel | 70 | 60 | 50 | L3 | 12 | 278×175×190 | B13 | 0 | 48/80 | 21,3 |
| 215080 | 70 Gel | 90 | 80 | 70 | L5 | 12 | 353×175×190 | B13 | 0 | 36/60 | 26,2 |
| 215085 | 75 Gel | 100 | 85 | 75 | 60528 | 12 | 352×175×211/232 | B1 | 0 | 36/48 | 29,8 |
| 215105 | 105 Gel | 140 | 125 | 105 | 62512 | 12 | 345×173×264/285 | B0 | 0 | 24/48 | 39,1 |
| 215150 | 130 Gel | 165 | 150 | 130 | B | 12 | 514×223×195/222 | B0 | 3 | 21/28 | 52,2 |
| 215210 | 180 Gel | 235 | 210 | 180 | C | 12 | 518×273×214/240 | B0 | 3 | 18/24 | 72,0 |
| 215180 | 180 Golf Cart Gel | 235 | 210 | 180 | Golf Cart | 6 | 243×189×252/273 | B0 | 0 | 24/36 | 30,4 |

TAB Motion in flooded and VRLA technology is a range of block batteries for all applications in small traction and leisure segment.

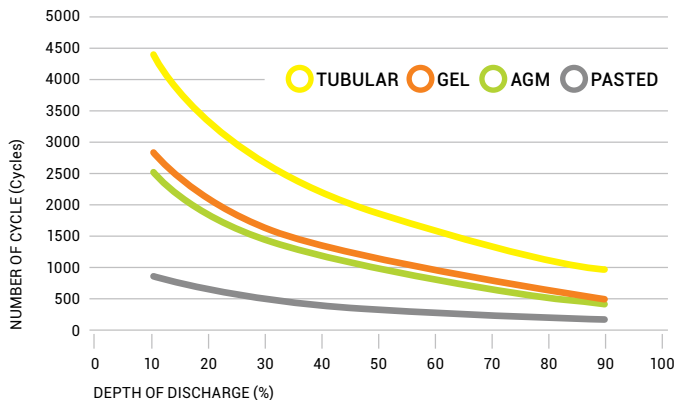
TAB Motion Pasted and **TAB Motion Tubular** are flooded batteries while **TAB Motion AGM** and **TAB Motion Gel** are gas recombination batteries. Both ranges have highest cyclic durability.

OPERATION:

To achieve optimal operating life avoid deep discharges. Never leave battery in a discharged state. Electrolyte level for flooded batteries has to be checked regularly and then filled with demineralized water (DIN43530-4).

The single point automatic watering system can be considered on some types. Valve regulated batteries with absorbed electrolyte (AGM) or gel electrolyte are sealed for life and need no watering.

DoD - Number of Cycles



V15-03-2018-EN (atelje jk®)

BOX TYPE

(L×W×H)

L2
242×175×190



L3
278×175×190



L3 GEL
278×175×190



L4
242×175×190



L5
353×175×190



L5 GEL
353×175×190



59518 (80P)
312×176×212



60528
344×172×212/234



60528 GEL
352×175×211/232



62512
344×172×262/284



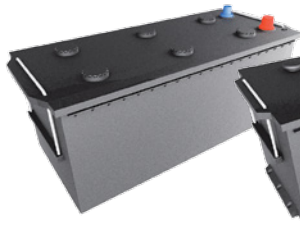
62512 GEL
345×173×264/285



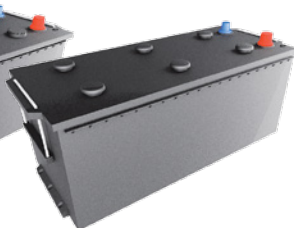
MAC 110
509×175×182/208



B
512×222×194/221



B GEL
514×223×195/222



C
518×273×214/240



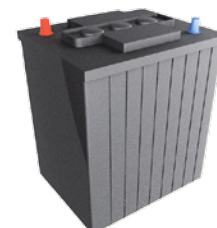
C GEL
518×273×214/240



GOLF CART
244×190×270/281

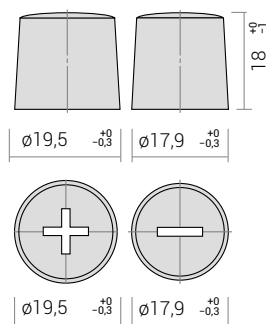


GOLF CART GEL
243×189×252/273

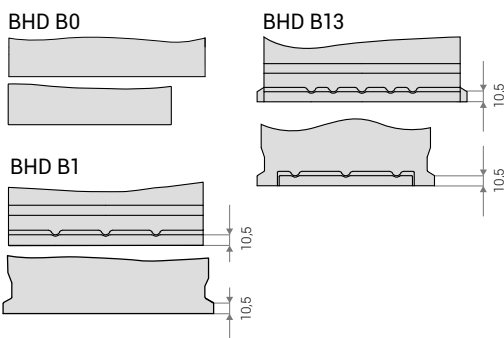


TERMINALS

Terminal 1



BASE HOLD DOWN



LAYOUT

